

## MYOB RetailEnterprise

### Centralized retail business management

MYOB RetailEnterprise streamlines multiple-store retail business management by giving you a global, centralized view of all your retail operations.

RetailEnterprise consists of two components: the 'Central' module, through which head office communicates with your various stores, and the 'Shop' module, through which each store communicates with head office.

### Central module

The Central module sits on a PC at head office and allows management to create and maintain uniform product line data for the business's various retail stores. The module allows management to create and maintain point-of-sale retail sites, supplier details and regional divisions, and all from a single, central source. With the RetailEnterprise Central module, your business can

- Import sales and inventory data
- Export standard product information
- Broadcast messages to your retail outlets

### Central module reports

The Central module also generates retail business management reports for the consolidated retail operation. You can make informed business management decisions based on detailed 'global view' reports, including:

- Sales Summary
- What's Selling
- Product Listing
- What Needs Ordering
- What's on Order

Clearwater Pty Ltd									
Report Period: 24Nov1999 to 30Aug2002									
Sales Summary									
Shop	No. of Sales	Items Sold	%	Sales \$	%	GP \$	%	GP%	
Clearwater - Mounie Pond	22849	42129	98.97	697,246.11	99.12	178,915.12	99.94	41.87	
Clearwater - Business	15584	28554	41.03	626,789.16	40.89	260,497.27	40.89	41.87	
<b>TOTALS</b>	<b>37,433</b>	<b>71,683</b>		<b>1,324,035.27</b>		<b>439,412.39</b>		<b>46.57</b>	
<b>Averages</b>				<b>46.57</b>		<b>17.89</b>			
Cost of Goods Sold				743,099.09					
Net Profit				138,025.28					
Gross Profit				627,219.38					
Sales				1,316,412.39					
Account Sales				11,622.88					

### Shop module

The Shop module sits on a PC in the retail outlet. With an 'incoming network connection' set up at the store level, the store can receive product and pricing information from central office, as well as other retail-specific messages.

The shop module will:

- Create information for export
- Import and selectively apply product updates
- Receive broadcast messages from head office

For maximum flexibility, the store can choose to accept or reject head office product updates.

MYOB

## RetailManager RetailEnterprise

Enhancement and Support

Registering your new MYOB RetailManager and RetailEnterprise entitles you to one-year enhancement and support. This keeps your business running smoothly and efficiently through phone, fax and email access to specialist support, together with free software upgrades\*.

Current subscribers also receive the latest tips and techniques, and information concerning changes in the business and legislative environment and how this might affect your business.

Please note: The purchase price of each new RetailManager, RetailManager site license and RetailEnterprise product includes a one-year entitlement to enhancement and support. On expiry of this one-year entitlement, the enhancement and support subscription must be renewed at your expense for each store. If enhancement and support is not continuously maintained, the product will not be supported by MYOB.

\* If a new version is released within your subscription period.

MYOB

## RetailManager Professional

### Onsite Assistance

For onsite implementation and assistance you can choose from dozens of MYOB RetailManager Professionals.



### Retailers on MYOB RetailManager:



Clarence Chang, Jazz World

"I found MYOB RetailManager very user-friendly and has simplified the way I handle my store. At a click of a button, I know the quantity and value of the CDs and how well my shop is performing"

### Catered for all types of retailers - from antiques to watches

#### Used by retailers of all kinds

Antiques • Art and Craft • Bags & Luggage • Bakery • Bicycles • Blinds and Window Covering • Books • Cafe • Cameras • Camping • Chemist • Cleaning Supplies • Clothing • Club • Computers • Copy Centre • Cosmetics • Dance Studio • Dive Shop • Electrical • Fabrics • Florists • Furnishings • Furniture • Gifts • Golf Pro • Hair Salon • Hardware • Health Food • Hobbies • Internet Cafe • Jewellers • Leather Goods • Lighting • Locksmith • Mobile Phones • Motorcar Accessories • Motorcar Spare Parts • Motorcycles • Music • Newsagent • Nursery & Landscaping • Office Machines • Shoes • Souvenirs • Sports Store • Stationery • Supermarket • Toys • Tyres • Video Games • Watches •



Distributed in Hong Kong by:

#### MYOB Hong Kong Limited

Unit 601, Top Glory Tower,  
262 Gloucester Road, Causeway Bay,  
Hong Kong

Tel: (852) 3402 9888

Fax: (852) 3402 9828

Email: retailers.hk@myob.com

Website: www.myob.com.hk

Channel Partner:

MYOB

RetailManager

Retail point-of-sale software

If you're a retail business looking for a front end software package that both simplifies the way you run your store and provides you with complete control over your retail business, then MYOB RetailManager is the ideal solution.

Ring up cash sales, lay-bys, invoices, quotes, take customer orders and identify unique sales opportunities with the easy to use Sales screen; RetailManager will update its stock inventory with every transaction.

RetailManager simplifies stock control, slashes up to 80% off stocktake times and creates retail-specific reports that will help your business reach its full potential.

#### Why MYOB RetailManager is better for your business:

- Fast, flexible sales
- Easy to use and understand
- So much more than a cash register
- No accounting knowledge needed
- Build more profitable customer relationships
- Runs independently or links to MYOB accounting software
- Add extra sales points as needed
- Simplified stock control
- Streamlined stocktaking by up to 80%
- Retail-specific business analysis

## Easy to set up point-of-sale hardware options

#### Touch Screen (optional)

Touch activated computer screen can be used to process sales. Easy to use and fast.

#### Keyboard

Use a standard PC keyboard or a programmable keyboard.

#### Electronic Cash Drawer (optional)

Easy access to cash. Automatically opens on completion of sale.



#### Pole Display (optional)

Provides clear display of item as they are entered and total sale.

#### Standard PC Components

MYOB RetailManager runs on readily available inexpensive standard PCs.

#### Docket Printer (optional)

Prints dockets/receipts automatically or on demand.

#### Bar Code Reader (optional)

Provides rapid entry of items - saves time and keystrokes.

## MYOB RetailManager -

### The complete retail picture

With RetailManager it's easy to keep track of every transaction in your store from sales, stock movements and gross profit, right through to staff actions and even customer details.

### Process sales fast

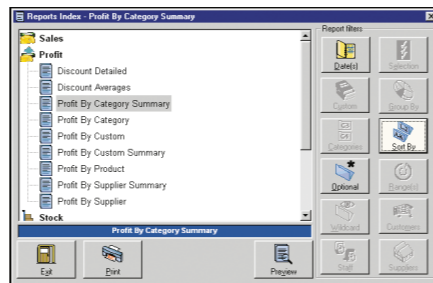
Ring up cash sales, lay-bys, invoices, quotes, take customer orders and identify unique sales opportunities fast with the easy-to-use Sales screen. New staff can be taught the basics in minutes.

### Build powerful customer relationships

With the ability to link transactions to customers, RetailManager makes it easier to identify profitable customers and the additional sales opportunities they represent – improving your customer service and building stronger, more profitable customer relationships.

### Produce reports at point-of-sale

Just a couple of quick keystrokes and you can tell exactly how your store is going at any point in time – RetailManager updates your stock inventory with each transaction, so you always know what's on lay-by, what's on order, and what your best-selling items are.



### Manage your stock

Create and maintain a detailed stock inventory, while simplifying the ordering, receiving and labeling of stock. Identify slower stock and get it moving – and ensure your best sellers are always in stock.

Simply check the delivery against the order in RetailManager to update the inventory, print the barcode labels (if the business uses them) and the stock is ready for the shelves.

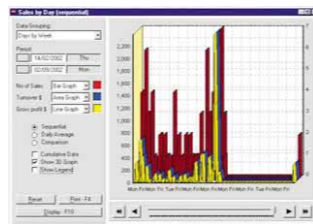


### Streamline your stocktaking

Reduce stocktake time and minimise stock losses by keeping track of your inventory. You can scan or type products in directly, and run a stocktake on the whole store, part of the store, or a single item. You can also keep close tabs on theft and shrinkage.

### Retail-specific business analysis

Capture sales, stock, staff and customer information with every transaction for a detailed analysis of store performance.



### RetailManager features include:

- **Set a till float**  
add and remove a float amount for each till and cash up session, and track non-stock items such as cash-paid staff supplies.
- **Process multiple sales**  
which means faster customer service, especially when one customer decides to change items in the middle of a sale.
- **Add-on sales prompt**  
prompt staff with stock-specific add-on sales messages.
- **Record non-cash sales**  
such as lay-bys, invoices, quotes, gift vouchers etc.
- **Cash-up from within the program**  
offers the convenience of cashing-up at any time from within the program instead of closing down and reopening (as with some other software).

- **Track serial numbers**  
improve stock control by tracking serial numbers from goods received to customer sale, including warranty dates on the sold item.

- **Print packing slips**  
use them as checklists when packing an order for shipping or collection.

### Recommended minimum system requirements

#### Installation:

- PC with Pentium® III processor (or equivalent) @500MHZ or better, with at least 128MB RAM
- Hard disk with at least 1GB free
- 16-bit colour, 800x600 screen resolution
- Windows® 2000/Me/NT®4 (SP 3 or higher)/XP Professional

#### Backups:

- To facilitate effective backups, a CD backup or removable drive solution is recommended.

#### Optional hardware devices:

- EFTPOS terminal
- Barcode scanner
- A4 laser printer for printing reports and bar code labels
- Docket printer - minimum 40 columns
- Electronic cash drawer
- Customer pole display
- Programmable keyboard
- Touch screen
- Scales

Note that a communications port is required for each additional device.

#### Registration:

You must register your copy of MYOB RetailManager. Registration is easy (and free). It helps us to keep you informed of any software updates necessitated by changes in government policy.

#### Notice to users:

Use of the enclosed software is subject to the licence agreement contained in the package.